

PeaceHealth St. Joseph Medical Center

In 1891, PeaceHealth St. Joseph was the first hospital founded by the Sisters of St. Joseph of Peace and has provided care to the greater Whatcom County community ever since. The Bellingham medical center is the area's sole community hospital. It is a Level II trauma center providing comprehensive specialty care and centers of excellence in cardiovascular, cancer, spine and joint replacements. Providers at our clinics in Bellingham and Lynden provide a full range of primary and specialty care services.

Service Area

Whatcom County, Washington. Bellingham is the largest city in the county, representing approximately 40% of the county's population.



Major Medical Services

- Behavioral health
- Cancer care
- Cardiac care
- Childbirth services
- Emergency department (Level II Trauma Center)
- Home health
- Hospice
- Imaging, infusion and laboratory services
- Orthopedics
- Physical therapy and rehabilitation
- Spine care
- Surgical, including robotic surgery

Facts & Figures (July 2024 to June 2025)

Total Licensed Beds	255
Average Daily Census	190
Average Length of Stay	4.4 days
Caregivers	3,618
Physicians and Clinicians	780
Inpatient Discharges	15,944
Clinic Visits	435,701
Births	1,886
Surgeries	9,967
ED Visits	72,223



Accreditations & Accomplishments

- ★ **Quality & Safety** — 2023-2025 Centers for Medicare and Medicaid Services 4-star overall rating (out of 5) on overall clinical performance
- ★ **Quality & Safety** — 'A' rating Leapfrog Hospital Grades for overall quality and safety annually for the past 11 years
- ★ **Cardiac Care** — Blue Distinction Center of Excellence, Blue Cross, Blue Shield Association
- ★ **Cardiac Care** — 2025 Mended Hearts National Hospital of the Year
- ★ **Cardiac Care** — 2025 American Heart Association Get With The Guidelines: Gold Plus Achievement
- ★ **Organ & Tissue Donation** — 2025 LifeCenter Northwest Organ Donation Process Excellence and Tissue Donation Referral Achievement Awards
- ★ **Surgical & Trauma Care** — 2025 American College of Surgeons Surgery Quality Improvement Program and Trauma Quality Improvement Program Accreditations
- ★ **Cancer Care** — 2025 American College of Surgeons Commission on Cancer Comprehensive Community Cancer Program Accreditation
- ★ **Maternity Care** — 2024-2025 Newsweek America's Best Maternity Hospital
- ★ **Coronary Care** — 2024 Healthgrades America's 100 Best Hospitals for Coronary Intervention Award for superior clinical outcomes in coronary intervention procedures (angioplasty with stent)
- ★ **Gastrointestinal Care** — 2024 Healthgrades America's 100 Best Hospitals for Gastrointestinal Care and Gastrointestinal Surgery Awards
- ★ **Stroke Care** — 2024 Healthgrades Stroke Care Excellence Award

2901 Squalicum Parkway
Bellingham, WA 98225
360-734-5400

<https://www.peacehealth.org/hospitals/st-joseph-medical-center>



Community Health

PeaceHealth collaborates with community partners and makes direct investments that improve wellness, access, quality and health justice. In FY25, PeaceHealth provided \$1,341,974 in support to Whatcom County organizations.

Learn more about the community of Whatcom County in our [2022-2025 Community Health Needs Assessment](#). Community health needs define our priorities and guide us in partnering with community-based organizations to address critical social determinants of health: [food insecurity](#), [housing](#), [access to care](#) and [behavioral health](#).

Foundation

With the help of generous donors, the [St. Joseph Medical Center Foundation](#) is able to meet our patients' many needs through their healthcare journey, including physical, emotional, financial and spiritual. Charitable support of our services changes lives and strengthens and comforts patients when they need it most.

Learn more about [St. Joseph Donor Impact](#) or [donate now](#).

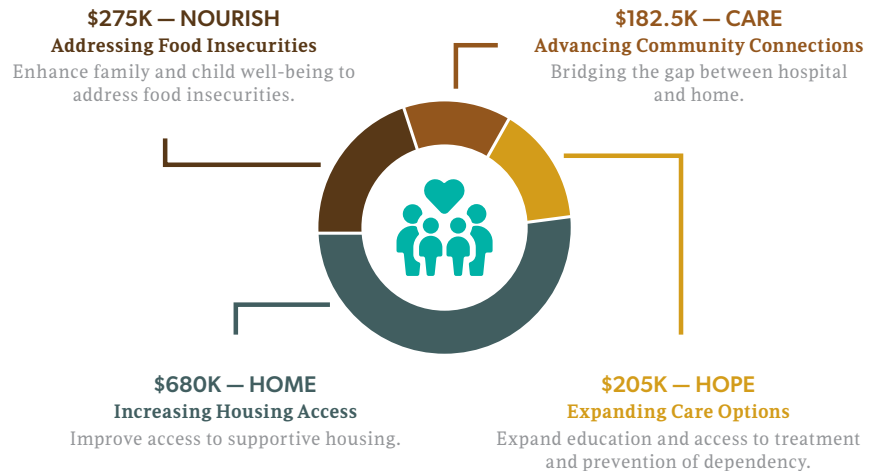
In FY25, St. Joseph Medical Center Foundation received \$3,254,211 in donations.

Community Benefit

8 cents of every dollar PeaceHealth spends in Whatcom County is towards community benefit

Community Impact Investment

Fiscal Year 2025 | July 1, 2024 – June 30, 2025



FY25 by the Numbers

July 1, 2024 – June 30, 2025

	St. Joseph Medical Center	Whatcom Hospice
Total Raised	\$3,254,211	\$6,764,059
Donors	682	1,459
New Donors	198	336
Planned Gifts	22	60
Planned Gifts Amount	\$554,017	\$5,353,433
Grants Received	\$550,000	-

Community Benefit Investment

Fiscal Year 2025 | July 1, 2024 – June 30, 2025

