

# PeaceHealth Sacred Heart Medical Center at RiverBend

Since its opening in 1936, Sacred Heart Medical Center has served the healthcare needs of Lane County residents. Today, PeaceHealth Sacred Heart Medical Center at RiverBend is a cutting-edge medical facility and a Level II trauma center. PeaceHealth Sacred Heart Medical Center is also home to central and southern Oregon's largest inpatient behavioral health unit. Clinics in the Eugene-Springfield area provide a comprehensive array of primary and specialized medical services to support the community's healthcare needs further.

## Service Area

PeaceHealth Sacred Heart Medical Center at RiverBend primarily serves Lane County, Oregon, as its core service area while extending its reach to encompass the entirety of Southern Oregon as its secondary service region.



## Major Medical Services

- Brain and spine care
- Cancer care, including infusion
- Cardiac care
- Childbirth services, including neonatal intensive care
- Emergency department (Level II Trauma Center)
- Home health
- Hospice
- Imaging, infusion and laboratory services
- Pediatrics
- Stroke care
- Surgical services, including robotic surgery, Gamma Knife and bariatric surgery
- Wound care

## Facts & Figures (July 2024 to June 2025)

Total Licensed Beds .....	384
Average Daily Census .....	283
Average Length of Stay .....	4.4 days
Caregivers .....	4,892
Physicians and Clinicians .....	934
Inpatient Discharges .....	23,344
Clinic Visits .....	522,753
Births .....	2,240
Surgeries .....	17,113
ED Visits .....	79,874



## Accreditations & Accomplishments

- ★ **Quality & Safety** — 2024-2025 Centers for Medicare and Medicaid Services 4-star overall rating (out of 5) on overall clinical performance.
- ★ **Quality & Safety** — 2022-2025 'A' rating from Leapfrog Hospital Grades for overall quality and safety and 2022 Top Hospital Award.
- ★ **Overall Quality** — 2025 U.S. News and World Report – 3rd Best Hospital in Oregon.
- ★ **Cardiac Care** — Cardiac Care Outcomes Assessment Program (COAP) award for Percutaneous Cardiac Intervention from the Foundation for Health Care Quality.
- ★ **Stroke Care** — 2025 American Heart Association's Get With The Guidelines: Gold Plus Quality Achievement Award for high standard of stroke care.
- ★ **Stroke Care** — 2025 Det Norske Veritas (DNV) Comprehensive Stroke Center.
- ★ **Surgery Quality** — 2025 U.S. News and World Report – 3rd Best Hospital in Oregon. 2025 American College of Surgeons Metabolic and Bariatric Surgery Accreditation and Quality Improvement Program (MBSAQIP) Accreditation.
- ★ **Surgery Quality** — 2025 American College of Surgeons Trauma Verification, Review, and Consultation, National Surgery Quality Improvement Program and National Surgery Quality Improvement Pediatric Program Accreditations.
- ★ **Quality & Safety** — 2024 Healthgrades Patient Safety Award for excellence in patient safety by preventing infections, medical errors and other preventable complications.
- ★ **Orthopedic Care** — 2024 Healthgrades America's 50 Best Hospitals for Outpatient Joint Replacement Award for superior clinical outcomes in outpatient total hip replacement and outpatient total knee replacement.
- ★ **Spinal Surgery** — 2022-2024 Healthgrades America's 100 Best Hospitals for Spine Surgery Award for superior clinical outcomes in back and neck surgeries and spinal fusion procedures.

3333 RiverBend Drive  
Springfield, OR 97477  
541-203-6712

<https://www.peacehealth.org/hospitals/peacehealth-sacred-heart-medical-center-riverbend>



## Community Health

PeaceHealth collaborates with community partners and makes direct investments that improve wellness, access, quality and health justice. In FY25, PeaceHealth provided \$1,470,124 in support to Lane County organizations.

Learn more about the community of Lane County in our [2022-2025 Community Health Needs Assessment](#). Community health needs define our priorities and guide us in partnering with community-based organizations to address critical social determinants of health: [food insecurity](#), [housing](#), [access to care](#) and [behavioral health](#).

## Foundation

With the help of generous donors, [Sacred Heart Medical Center Foundation](#) is able to meet our patients' many needs through their healthcare journey, including physical, emotional, financial and spiritual. Charitable support of our services changes lives and strengthens and comforts patients when they need it most.

Read the PeaceHealth Foundation's latest [Gratitude Report](#) or make a [donation now](#).

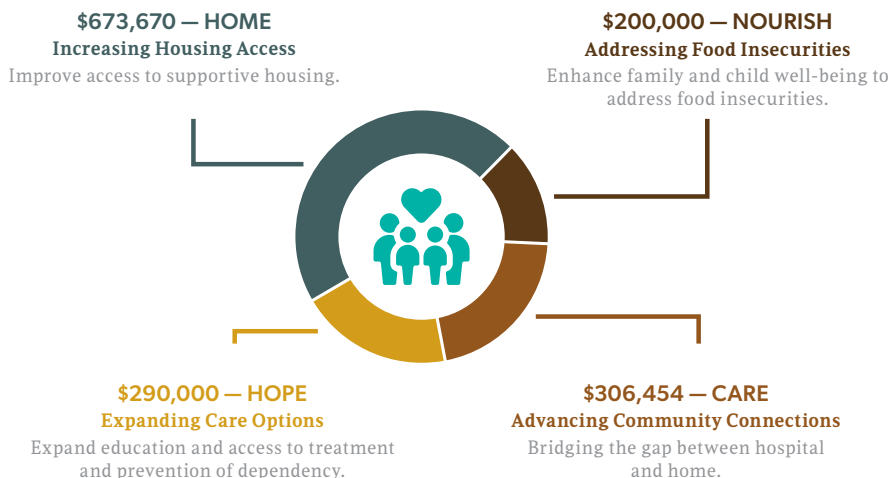
In FY25, Sacred Heart Medical Center Foundation received \$5,754,938 in donations.

## Community Benefit

9 cents of every dollar PeaceHealth spends in Eugene-Springfield is towards community benefit.

## Community Impact Investment

Fiscal Year 2025 | July 1, 2024 – June 30, 2025



## FY25 by the Numbers

July 1, 2024 – June 30, 2025

<b>\$5,754,938</b> Total Raised	<b>46</b> Planned Gifts
<b>1,033</b> Total Donors	<b>\$1,655,951</b> Planned Gifts Amount
<b>451</b> New Donors	<b>\$470,000</b> Grants Received

## Community Benefit Investment

Fiscal Year 2025 | July 1, 2024 – June 30, 2025

