

PeaceHealth Peace Harbor Medical Center

Located in Florence, on the beautiful Oregon coast, Peace Harbor Hospital opened its doors to the local community in 1989. PeaceHealth Peace Harbor is a critical access hospital and Level III trauma center, offering a wide spectrum of high-quality health care services, including primary care and walk-in clinics.

Service Area

PeaceHealth Peace Harbor Medical Center's primary service region encompasses the rural communities of Florence, Mapleton, Swisshome, and Westlake in Lane County, Waldport and Yachats in Lincoln County and Reedsport in Douglas County.



Major Medical Services

- Cardiac care
- Childbirth services
- Emergency department (Level III Trauma Center)
- Foot care
- Home health
- Hospice
- Imaging, infusion and laboratory services
- Intensive care unit
- Orthopedics
- Physical therapy and rehabilitation
- Surgical services
- Women's health

Facts & Figures *(July 2024 to June 2025)*

Total Licensed Beds	21
Average Daily Census	8
Average Length of Stay	3.2 days
Caregivers	507
Physicians and Clinicians	106
Inpatient Discharges	858
Clinic Visits	68,740
Births	42
Surgeries	2,005
ED Visits	12,970

Accreditations & Accomplishments

- ★ **Quality & Safety** — DNV accredited critical access hospital.
- ★ **Quality & Safety** — Recognized for innovative Antimicrobial Stewardship Program that ensures patients receive the right antibiotic at the right dose at the right time for the right duration.





Community Health

PeaceHealth collaborates with community partners and makes direct investments that improve wellness, access, quality and health justice. In FY25, PeaceHealth provided \$380,000 in support to Florence area organizations.

Learn more about the community of Lane County in our [2022-2025 Community Health Needs Assessment](#). Community health needs define our priorities and guide us in partnering with community-based organizations to address critical social determinants of health: [food insecurity](#), [housing](#), [access to care](#) and [behavioral health](#).



Foundation

With the help of generous donors, [PeaceHarbor Medical Center Foundation](#) is able to meet our patients' many needs through their healthcare journey, including physical, emotional, financial and spiritual. Charitable support of our services changes lives and strengthens and comforts patients when they need it most.

Read the PeaceHealth Foundation's latest [Gratitude Report](#) or make a [donation now](#).

In FY25, Peace Harbor Medical Center Foundation received \$1,128,560 in donations.

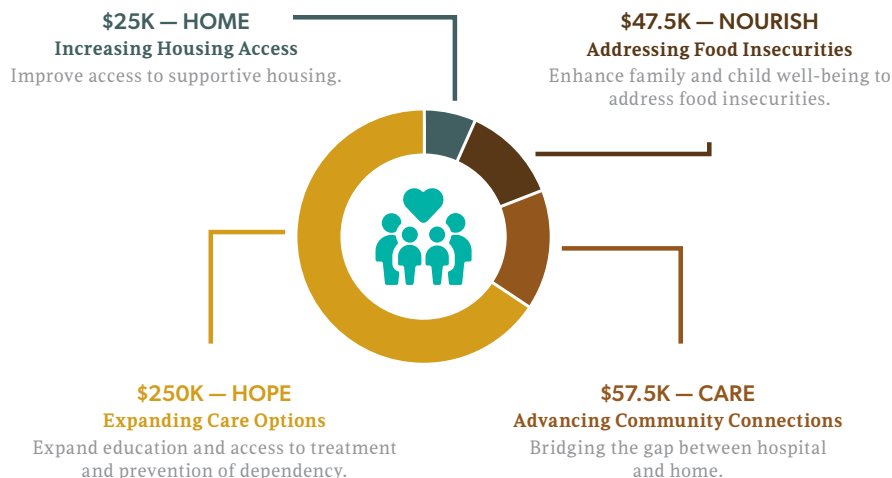


Community Benefit

In FY25, PeaceHealth provided nearly \$3M in free or reduced-cost healthcare to residents of Florence and western Lane County.

Community Impact Investment

Fiscal Year 2025 | July 1, 2024 – June 30, 2025



FY25 by the Numbers

July 1, 2024 – June 30, 2025

\$1,128,560	9
Total Raised	Planned Gifts
204	\$1,361,601
Total Donors	Planned Gifts Amount
63	
New Donors	

Community Benefit Investment

Fiscal Year 2025 | July 1, 2024 – June 30, 2025

