

PeaceHealth Ketchikan Medical Center

In 1923, the Sisters of St. Joseph of Peace opened the Little Flower Hospital. A century later, that hospital has become PeaceHealth Ketchikan Medical Center, a vital institution dedicated to delivering top-quality care. The center is unwavering in promoting health and well-being, equipped with industry-leading diagnostic tools and staffed by a team of compassionate healthcare professionals. Our clinic in Prince of Wales, in partnership with the City of Craig, extends essential primary care services with diagnostic imaging and visiting specialty care options and a welcoming space for visiting specialists to connect with and care for patients.

Service Area

The region encompasses the Ketchikan Gateway Borough and the picturesque Prince of Wales Island, both situated in the southern region of Southeast Alaska.



Major Medical Services

- Behavioral health
- Cancer care
- Childbirth services
- Emergency department (Level IV Trauma Center)
- Home health
- Hospice
- Imaging, infusion and laboratory services
- Long-term care
- Orthopedics
- Pediatrics
- Physical rehabilitation and therapy
- Respiratory care
- Surgical services
- Visiting specialty care
- Women's health

Facts & Figures (July 2024 to June 2025)

Total Licensed Beds	25
Total Long-term Care Beds	29
Average Daily Census	7
Average Length of Stay	3.4 days
Caregivers	486
Physicians and Clinicians	98
Inpatient Discharges	782
Clinic Visits	38,566
Births	137
Surgeries	2,220
ED Visits	8,386

Accreditations & Accomplishments

- ★ **Safety & Quality** — 2025 Alaska Hospital & Healthcare Association Innovation in Patient Safety & Quality Award.
- ★ **Quality & Excellence** — 2025 Newsweek America's Best In-State Hospitals 2025.
- ★ **Quality & Improvement** — 2025 American College of Surgeons Surgery Quality Improvement Program Accreditation.
- ★ **Nursing Excellence** — 2020-2024 American Nurses Credentialing Center Pathways to Excellence designation.



3100 Tongass Ave.
Ketchikan, AK 99901
907-225-5171

<https://www.peacehealth.org/hospitals/peacehealth-ketchikan-medical-center>





Community Health

PeaceHealth collaborates with community partners and makes direct investments that improve wellness, access, quality and health justice. In FY25, PeaceHealth provided \$100,500 in support to Ketchikan Gateway Borough and Prince of Wales organizations.

Learn more about the community of Ketchikan in our [2022–2025 Community Health Needs Assessment](#). Community health needs define our priorities and guide us in partnering with community-based organizations to address critical social determinants of health: [food insecurity](#), [housing](#), [access to care](#) and [behavioral health](#).



Foundation

With the help of generous donors, [PeaceHealth Ketchikan Medical Center Foundation](#) is able to meet our patients' many needs through their healthcare journey, including physical, emotional, financial and spiritual. Charitable support of our services changes lives and strengthens and comforts patients when they need it most.

Read the PeaceHealth Foundation's latest [Gratitude Report](#) or make a [donation now](#).

In FY25, Ketchikan Medical Center Foundation received \$812,082 in donations.

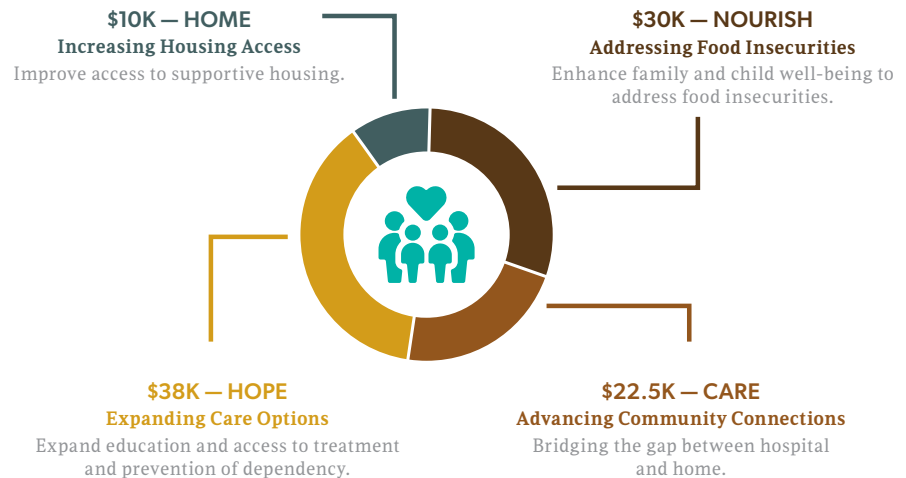


Community Benefit

In FY25, PeaceHealth provided over \$4M in free or reduced-cost healthcare to residents of Ketchikan Gateway Borough and Prince of Wales.

Community Impact Investment

Fiscal Year 2025 | July 1, 2024 – June 30, 2025



FY25 by the Numbers

July 1, 2024 – June 30, 2025

\$812,082	5
Total Raised	Planned Gifts
154	\$508,960
Total Donors	Planned Gifts Amount
20	\$137,000
New Donors	Grants Received

Community Benefit Investment

Fiscal Year 2025 | July 1, 2024 – June 30, 2025

