

# PeaceHealth Cottage Grove Community Medical Center

PeaceHealth Cottage Grove Community Medical Center recently celebrated its 20th anniversary as a 40,000-square-foot critical access hospital and primary care clinic in south Lane County. To complement its offerings, clinics in Cottage Grove, Creswell and Dexter provide the community with access to skilled healthcare providers spanning various medical specialties.

## Service Area

PeaceHealth Cottage Grove Community Medical Center core service region is centered around the rural communities of Cottage Grove, Creswell, Lorane, Dexter and Dorena in southern Lane County and Drain, Elkton, Oakland and Yoncalla in northern Douglas County.



## Major Medical Services

- Emergency department
- Family medicine
- Imaging, infusion and laboratory services
- Internal medicine
- Medical social work
- Pediatrics
- Physical therapy and rehabilitation
- Walk-in clinic
- Wound and foot care

## Facts & Figures (July 2024 to June 2025)

Total Licensed Beds .....	14
Average Daily Census .....	2
Average Length of Stay .....	3.1 days
Caregivers .....	203
Physicians and Clinicians .....	51
Inpatient Discharges .....	230
Clinic Visits .....	43,634
ED Visits .....	15,038

## Accreditations & Accomplishments

- ★ **Nursing Excellence** — Recognized for overall excellence in multiple categories by the National Organization of State Office of Rural Health.
- ★ **Clinical Excellence** — 2025 Press Ganey Human Experience Award Guardian of Excellence award for patient experience with Infusion Services.



1515 Village Drive  
Cottage Grove, OR 97424  
541-767-5500

<https://www.peacehealth.org/hospitals/peacehealth-cottage-grove-community-medical-center>





## Community Health

PeaceHealth collaborates with community partners and makes direct investments that improve wellness, access, quality and health justice. In FY25, PeaceHealth provided \$212,555 in support to Cottage Grove area organizations.

Learn more about the community of South Lane County in our [2022–2025 Community Health Needs Assessment](#). Community health needs define our priorities and guide us in partnering with community-based organizations to address critical social determinants of health: [food insecurity](#), [housing](#), [access to care](#) and [behavioral health](#).



## Foundation

With the help of generous donors, [Cottage Grove Community Medical Center Foundation](#) is able to meet our patients' many needs through their healthcare journey, including physical, emotional, financial and spiritual. Charitable support of our services changes lives and strengthens and comforts patients when they need it most.

Read the PeaceHealth Foundation's latest [Gratitude Report](#) or make a [donation now](#).

In FY25, Cottage Grover Community Medical Center Foundation received \$97,263 in donations.

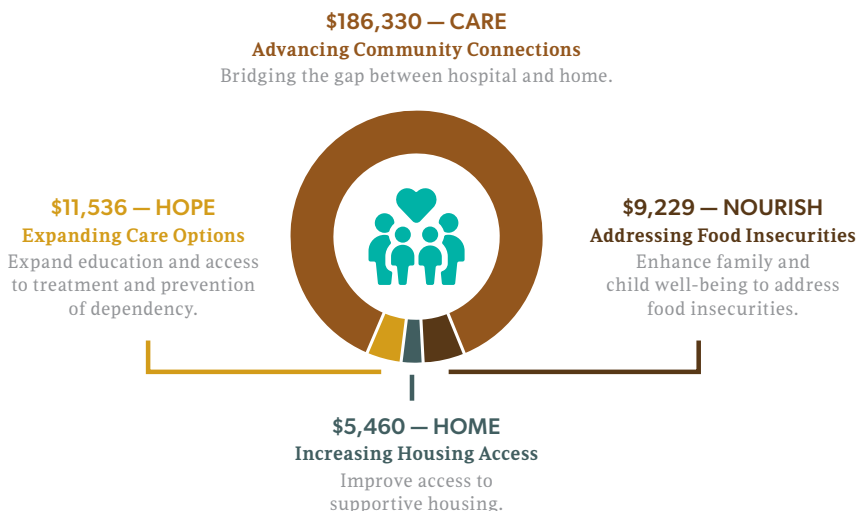


## Community Benefit

In FY25, PeaceHealth provided \$1.75M in free or reduced-cost healthcare to residents of Cottage Grove and southern Lane County.

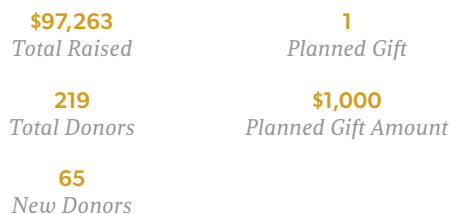
## Community Impact Investment

Fiscal Year 2025 | July 1, 2024 – June 30, 2025



## FY25 by the Numbers

July 1, 2024 – June 30, 2025



## Community Benefit Investment

Fiscal Year 2025 | July 1, 2024 – June 30, 2025

