



PeaceHealth  
Foundations

# You're the reason why



Gratitude Report 2024-2025

# A message from

System Vice President and  
Chief Philanthropy Officer, Anne Rasmussen



There's a reason why the pages of this year's Gratitude Report are filled with so many incredible stories of life-changing and life-saving care — and that reason is you. It is both grounding and inspiring to witness what becomes possible when philanthropy and mission unite in the spirit of hope, healing and peace.

In today's rapidly changing healthcare landscape, your generosity matters more than ever. Thanks to you, patients receive life-saving treatments, families find comfort and our communities grow stronger and healthier. Because of you, we are elevating local emergency services in the communities where we live and work, ensuring that urgently needed care is only moments away when those moments matter most. We're taking nursing excellence to the next level through investments in education, mentorship and innovation. And we are transforming how we care for patients not just within our hospital walls, but out in the community. But that's just the start.

From the earliest days of our 135-year Ministry, the Sisters of St. Joseph of Peace set this healing Mission into motion with courage, compassion and an unwavering belief in the dignity of every person as a spark of the divine. That legacy continues in you. We are deeply moved that you share our commitment and support this sacred work through your philanthropy — because safe, compassionate and quality care belongs to all, regardless of the ability to pay.

As we celebrate PeaceHealth's President and CEO, Liz Dunne, for her decade of dedicated service, we now welcome Sarah Ness to the helm — embracing the future with optimism and purpose as we strive to redefine medicine through the lens of whole-person care. Our communities are at their best when those who are the weakest and sickest are lifted up, given a voice and surrounded by expert, loving care. In these times of challenge and change, your generosity ensures that greater hope and healing are not just ideals, but lived realities.

Together, we have accomplished so much — and this is only the beginning. With your philanthropic partnership, we will continue building momentum for bold new campaigns and innovative initiatives to advance outstanding care for generations to come.

Thank you for making a life-saving difference,

Anne Rasmussen, MBA, CFRE, FCEP

# Incoming President and CEO, Sarah Ness, talks about her why



I'm deeply honored and truly humbled to serve as PeaceHealth's incoming President and CEO. I've devoted over 20 years of my life to this incredible organization for one simple reason: this Ministry is like no other. Rooted in courage, compassion and a sacred calling, it transcends the business of healthcare and compels us to serve, heal, and uphold the dignity of every person entrusted to our care.

What inspires me most is the power of one PeaceHealth — a remarkable ecosystem of caregivers, physicians, clinicians, community boards and donors. Together, we are on a path of transformation, not just in healthcare but in how we show up for our communities, bringing hope, healing and peace to every moment.

Looking ahead, our course must be bold. We will move from good to great guided by our commitment to person-first, value-driven and highly trusted care. This means placing the individual at the heart of everything we do, stewarding resources wisely and being *the* trusted healthcare partner in every community we serve.

I want to acknowledge Liz Dunne, whose outstanding leadership and deep dedication shaped the PeaceHealth we know today. Building on her legacy of integrity, equity and innovation, I am proud to carry this work forward.

Today, we stand on the threshold of what's next to revolutionize, modernize and elevate care for our entire region. This journey will take all of us — every voice, every role, every philanthropic gift working together. I'm honored to walk this path with you as part of one PeaceHealth.

Sincerely,

Sarah Ness  
Incoming PeaceHealth President and Chief Executive Officer

Building tomorrow's PeaceHealth



PERSON FIRST



VALUE DRIVEN



HIGHLY TRUSTED

## Beyond the office

We know Sarah as PeaceHealth's new President and Chief Executive Officer — but what about the person outside of work? We asked Sarah a few fun questions to give you a glimpse into her likes, hobbies and interests.

- › Your favorite book? *Inner Excellence* by Jim Murphy
- › A song that will always lift your mood?  
*A Sky Full of Stars* by Coldplay
- › Your very first job? Washington State Senate Page
- › Name a fun fact about you? Skiing Big Sky Montana
- › A favorite quote? *"Let us be who we say we are,"*  
Sr. Kathleen Pruitt, CSJP
- › Hobby you love outside of work? Entertaining friends and family
- › One thing you wish you had more time for? Moments spent by the ocean/water

## A lasting legacy of reimagined care

Over the past decade, PeaceHealth President and CEO, Liz Dunne, has inspired transformational change and significant achievements in care. As she steps into retirement beginning January 2026, Liz shares: "Leading PeaceHealth has been the most meaningful chapter of my career. My heart is full and my mind at peace knowing Sarah will steward PeaceHealth's cherished legacy into the future." Thank you, Liz, for your courageous compassion and profound impact.







FY25 by the numbers

Total dollars raised  
**\$38,331,580**

Total number of gifts  
**10,407**

Total number of donors  
**6,425**

Total number of new donors  
**1,913**

Charitable gifts to a specific PeaceHealth Foundation stay in the community where they were given.

Northwest Network Foundations

St. Joseph	\$3,254,211
Whatcom Hospice	\$6,764,059
Ketchikan	\$812,082
United General	\$131,738

Columbia Network Foundations

Southwest	\$17,761,851
St. John	\$2,487,954

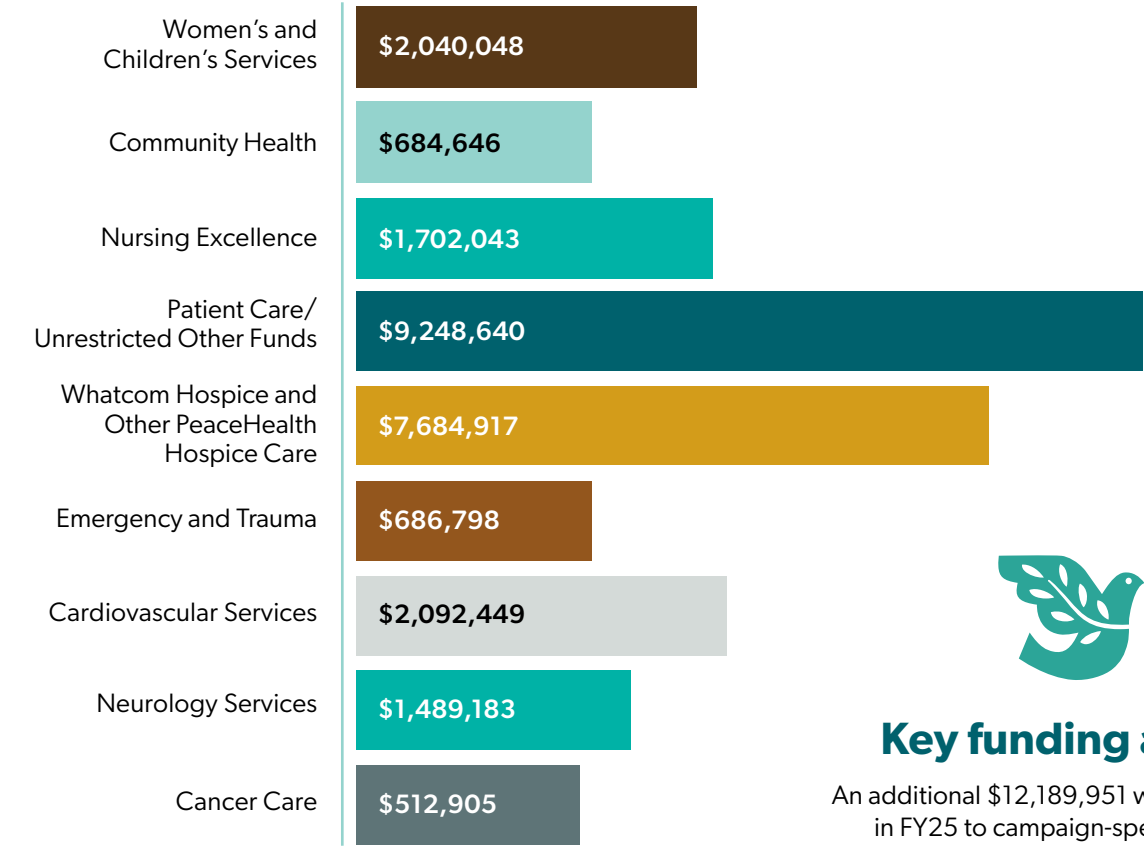
Oregon Network Foundations

Sacred Heart	\$5,754,938
Peace Harbor	\$1,128,560
Cottage Grove	\$97,263

An additional \$138,924 was contributed in FY25 to support systemwide programs.

From the rugged shores of Ketchikan, Alaska, to the welcoming streets of Cottage Grove, Oregon, PeaceHealth proudly serves our beautifully diverse communities every single day — and you’re the reason why! Philanthropy drives the entire PeaceHealth network, providing life-changing and life-saving care for all, close to home. United as one PeaceHealth — and powered by caregivers, clinicians, board members and donors — every aspect of medicine is strengthened. Our deep commitment to this region ensures that no matter where we live, the best possible, most compassionate care is always within reach.

Thank you for investing in a healthier, more hopeful future for our communities!



**Key funding areas**  
An additional \$12,189,951 was contributed in FY25 to campaign-specific funds.







## Out with the old, in with the new — thanks to you!

At **PeaceHealth Ketchikan**, your generosity fuels our commitment to delivering exceptional care across Southeast Alaska. One powerful example is the remarkable progress underway in our Emergency Department. After nearly a decade of use, our CT scanner needed an upgrade. With the help of philanthropic and grant support — combined with more than two years of planning and construction required to build space for it — our new CT scanner has landed! This state-of-the-art equipment makes our hospital home to the latest imaging technology available. Today, we're able to offer top-tier diagnostic care right here at home. This dramatically reduces the need for patients to leave the island for critical diagnostics and treatment. Through your continued support of advancements like these, the possibilities ahead are truly limitless!

“**You never expect the unexpected of course. But when it happened to me, I got immediate, incredible care from PeaceHealth Ketchikan that turned dark moments into light. And today, I'm a stroke survivor.**” — JOCELYN, grateful patient

## You bring expert care close to home

**Thanks to your generosity**, our surgical teams at **PeaceHealth Peace Harbor** are now equipped with two new advanced endoscopy towers. These leading-edge surgical tools provide high-definition visualization for minimally invasive procedures across multiple specialties, including general surgery, gynecology, ENT and gastroenterology. As a result, our dedicated, skilled caregivers have exactly what they need to enable safer surgeries, faster recoveries and better outcomes. What's more, this innovative technology strengthens our ability to deliver life-saving emergency care locally.

**Because of your support**, our ENT surgeons have access to specialized instruments to perform a broader range of ear, nose and throat procedures. These technologies enable more precise, effective care for both adults and children, reducing the need to travel far for treatment and strengthening our ability to respond to patients' needs, even in emergencies. Your investments also open the door to expanded pediatric ENT services, ensuring our youngest patients can receive the specialized care they need close to home.

**We appreciate you! Nearly \$190,000 has been raised to acquire these new technologies.**

## Growing together, stronger than ever

Big news from **PeaceHealth St. Joseph**! Thanks to your generous support, our **Stronger Together Campaign** — one of the most ambitious community efforts in our 135-year history — is turning bold dreams into reality. Construction is officially underway on the new Peter Paulsen Pavilion, a major expansion that will add 120,000 square feet of space over six floors to our medical center. This transformative project will dramatically enhance our Emergency Department and Women's and Children's Services, helping us deliver even greater care to loved ones, friends and neighbors in Whatcom County.



“**I went to the Emergency Department at PeaceHealth St. Joseph for a good reason and left knowing that I got the best treatment possible. It's why I'm here today.**” — MARTIN, grateful patient

**The Peter Paulsen Pavilion** will add 142 new private patient rooms to support more efficient, personalized care, along with a newly completed 600-stall parking garage for more convenient hospital access. Renovations throughout the existing buildings will further enhance the experience for patients and caregivers alike.

➤ **The pavilion is just the beginning!** Your support can build on what we've started to drive innovation, support caregivers and improve outcomes for patients of every age.

**SCAN**  
to check out the latest  
construction updates



## Reimagining a healthier future

We're celebrating an extraordinary milestone at **PeaceHealth Southwest**! Thanks to you, our largest fundraising campaign in Clark County history — **Healthcare Reimagined** — is transforming emergency care in truly remarkable ways. When Phase 2 of the campaign is completed in early 2026, our Emergency Department will double in size, feature the latest technology and equipment, and offer 30% more private patient rooms — all designed to meet the needs of our region's rapidly growing community.



“**This Emergency Department is exactly what the county needs. It allows us to serve better than ever before.**”

— SARAH BOMMELS, RN, BSN,  
Emergency Department Caregiver

### Overwhelmed with gratitude!

See the exciting progress we're making to reimagine healthcare in southwest Washington — with your help.



### You're the reason why

- **We have already opened two of our five new state-of-the-art trauma resuscitation rooms** that feature the most advanced medical lighting and equipment. These critical care spaces ensure our care teams can respond rapidly and effectively in the most urgent moments to improve patient outcomes and save more lives.
- **Our Community Health Hub is another first!** This groundbreaking initiative connects trusted social service providers with patients in need. Every day, thanks to you, it's helping neighbors who are struggling with food insecurity, housing instability, domestic abuse and other barriers to living healthier, fuller lives.



You’re changing kids’ health and futures



Through your generous gifts to the Children’s Miracle Network program at **PeaceHealth Sacred Heart**, you create miracles for local families every day. Callan’s parents are quick to agree. Their tiny baby boy was born at PeaceHealth Sacred Heart at RiverBend weighing just two pounds. Immediately, our NICU team took over his care. Among many acute health challenges, Callan suffered from retinopathy of prematurity (ROP), a serious eye condition that can cause blindness in premature infants if left untreated. Because of your gifts, we’re equipped to conduct advanced vision and hearing screenings that help detect this condition early — at no cost to families in need. Just last year, more than \$150,000 in donor dollars supported this critical work. Thanks to you, Callan not only survived, but is truly thriving today!

Your wonderful generosity helped us raise more than \$1.5 million last year to fund vital NICU services at **PeaceHealth Sacred Heart**. This included providing essential items like diapers, donor breast milk, car seat covers and specialized supplies like respiratory equipment — none of which are billed to the families we serve. **You make incredible NICU care possible, thank you.**

You spark hope and healing

For generations, **PeaceHealth St. Joseph** has been a trusted source of exceptional care for women and children in Whatcom County. Now, thanks to the extraordinary generosity of our community through the **Stronger Together Campaign**, we’re entering an exciting new era. Our new Peter Paulsen Pavilion will soon house some of the most advanced, comprehensive Women’s and Children’s services in the region — including enhanced pediatric care and a state-of-the-art labor and delivery facility. This transformation also paves the way for **PeaceHealth St. Joseph** to become a Level III NICU, ensuring the best possible care for our community’s most fragile newborns, close to home. Thanks to you, great local care will be even greater!



You’re the reason why

› We’re closing healthcare equity gaps and expanding access to expert, compassionate care for all. Through enhanced translation services, virtual and in-person tours and other innovative initiatives, we’re elevating quality prenatal, labor and postpartum care. Because of you, every mother is supported, cared for and understood, regardless of background, financial situation or language.

“When patients can express their fears, symptoms and questions in their own language, everything changes. It builds trust, brings clarity and allows us to deliver the compassionate care every person deserves.”  
— SONIA, PeaceHealth St. Joseph RN



You offer dignity, peace and comfort

Your compassionate gifts to **Whatcom Hospice** are acts of true grace, ensuring that no one in our community faces the final journey alone. Because of you, we’re able to deliver essential services not covered by Medicare — such as complimentary, alternative therapies like acupuncture, massage treatments, music thanatology and more — all proven to ease pain and offer comfort. Through our dedicated volunteers and your generosity, we’re also bringing enriching community programs to our hospice house like *Animals as Natural Therapy*. The joy is unmistakable as patients light up while visiting with rabbits, goats, chickens, dogs — and even miniature horses! Together, we’re easing the way for each and every hospice patient who turns to us, regardless of the ability to pay.

Your generosity supports more than 150 compassionate, dedicated hospice caregivers, along with over 200 committed volunteers who together provide expert, loving care for an average of 250 hospice patients each day. But your impact doesn’t stop there. Because of your support, families navigating the heartbreaking loss of a loved one have access to vital bereavement programs, including grief camps for children, all at no cost.

Elevating care with your help

Because of you, **PeaceHealth Peace Harbor** has recently welcomed a new highly skilled Nurse Practitioner to our hospice care team. This key staff addition has enhanced our team’s ability to swiftly and effectively manage necessary medication changes for our hospice patients, while reducing the number of times clinicians need to be on call by 25% — leading to more manageable work schedules and ultimately better care for our patients. We’re hearing positive feedback from our patients and their families about this enhanced level of care. Thank you for making it possible.

Our expert hospice care spans the region

We’re proud to share that all nine PeaceHealth Hospice locations across Alaska, Washington and Oregon have earned **The Joint Commission’s Gold Seal of Approval® for Hospice Accreditation** — a distinguished recognition of our commitment to safe, high-quality patient care. Your generosity powers this level of excellence, thank you.



“Without your loving support, I couldn’t have made it through this most difficult time of watching my husband pass. The comfort and compassionate care you gave us both were something beyond the ordinary. You are all angels.”  
— BETH, grateful loved one





Fueled by your support, driven by innovation



Your generosity is transforming lives throughout the Willamette Valley — from the Coast to the Cascades. Thanks to donors like you, we’ve reached the halfway mark of our ambitious \$4.1 million Neurosciences Campaign to advance neurosurgery and stroke care at **PeaceHealth Sacred Heart**. Together, we’re changing the future of brain and spine treatment for the entire region by enhancing our neurosurgery capabilities and expanding the groundbreaking Telestroke Network across Oregon. This means world-class, life-saving care right here at home!

**Thanks to you**, the Telestroke Network at **PeaceHealth Sacred Heart** at RiverBend is taking shape — unleashing the most innovative, life-saving stroke care for patients across Oregon. This pioneering initiative uses cutting-edge Teledoc technology to connect caregivers at smaller, rural hospitals with neurology specialists at Sacred Heart. Through real-time, virtual consultations, care teams can deliver the right treatment faster — ensuring patients in remote communities receive expert stroke care locally when every minute counts!

- Last year, our expert care teams...
- Performed more than 1,700 neurosurgeries.
  - Treated over 1,400 strokes.
  - Conducted 1,400 neurological consults by phone.
- Your generosity fuels this life-saving care!

**You’re the reason why**

› We’re now home to some of the most advanced neurosurgery equipment available. This includes the O-arm (Excelsius 3D) imaging system, which enhances surgical efficiency and patient outcomes for complex spinal and neurological procedures. Your generosity has also helped us add a state-of-the-art C-arm, offering exceptional versatility for treating conditions of the neck, lower back and scoliosis.

Elevating life-saving stroke care, together

Thanks to a generous gift from the OCCU Foundation and the support of other donors like you, **PeaceHealth Cottage Grove** has acquired the advanced audio and video technology needed to join the Telestroke program. With this virtual platform now in place, neurology specialists at Sacred Heart can share their expertise in real time — collaborating remotely with Emergency Department care teams in Cottage Grove to ensure faster diagnoses, more timely treatment and better outcomes for patients experiencing acute stroke symptoms. It’s just one more shining example of how the power of philanthropy is building a healthier future for all!



“OCCU has significantly increased our investment in south Lane County, and we are thrilled that the OCCU Foundation can support the introduction of Telestroke technology at PeaceHealth Cottage Grove Community Medical Center.” — RON NEUMANN, OCCU President & CEO and chair of the OCCU Foundation

A heart healthy future, thanks to you



Every day at **PeaceHealth St. Joseph**, we put our hearts into caring for yours. And thanks to your support, we’re greatly expanding life-saving cardiovascular services in Whatcom County, including plans to add a second dedicated Electrophysiology (EP) Lab at our hospital. This means increased capacity and a dramatic reduction in wait times — from 10 to 12 weeks down to three weeks or less — for patients with cardiac conditions such as arrhythmias. Together, we’re meeting the rising demand for advanced cardiovascular care in our growing and aging community, improving patient outcomes and fostering health equity for all. By keeping great care local, we create healthier hearts here at home.

**More than 4,200 procedures are performed annually in our Cath Lab. With the addition of a second EP Lab**, over 45 additional EP procedures are expected each month. To meet Whatcom County’s projected 14.7% growth in outpatient cardiology needs through 2027, we’re also expanding our clinical staff. Your support accelerates our life-changing efforts — thank you!

The power to inspire



When asked what motivated his transformational \$1 million gift to expand the EP Lab at **PeaceHealth St. Joseph**, Tom Hancock doesn’t hesitate to say that it was the “unbelievable treatment” his late wife, Karen, received. “I wanted to leave a legacy and really make an impact. It was meaningful for me to do,” shares Tom, reflecting on his decision to make this significant gift in gratitude for the cardiovascular care he and his wife received over the years. “PeaceHealth has been our go-to for physicians. It’s the premier hospital and medical center in the area,” Tom adds. “Dr. Omar Jaffer played an important role in Karen’s care and was an incredible partner in helping her.”

Looking ahead, Tom hopes his support will enable PeaceHealth to continue innovating, elevating and delivering outstanding care for everyone in Whatcom County. He also hopes his gift will inspire more kindness and generosity across the community, saying, “I would encourage others who are considering philanthropy to do it now, so growth can take place.” We are beyond grateful for Tom’s transformational gift and for those who’ve chosen to give in the same way.

“The hospital provided unbelievable treatment for my wife Karen.” — TOM HANCOCK, transformational gift donor



Fueling excellence across the region

We’re proud to announce that three of our cardiac intervention programs — at PeaceHealth St. John, PeaceHealth Southwest and PeaceHealth Sacred Heart — have received the **2024 Award of Excellence** from the Cardiac Care Outcomes Assessment Program. This prestigious recognition celebrates the physicians, nurses, caregiver teams and hospital leaders whose performance and dedication elevate excellence in cardiac care that stretches across the region. Congratulations to all!



You're advancing the fight

For the residents of Cowlitz County, there's great peace of mind in knowing quality cancer care is never far away. And we have you to thank for that! Over the years, incredible philanthropic support from community members like you has gone far to elevate radiation oncology at [PeaceHealth St. John](#). This contributes to our designation as an approved cancer program by the nation's Commission on Cancer, recognizing our comprehensive focus on everything from prevention and early diagnosis, to optimal treatment, rehabilitation and end-of-life care.

Now, with your support, we're paving the way to significantly enhance local cancer care by bringing the most advanced radiation oncology therapy available to our community — the state-of-the-art Varian TrueBeam Linear Accelerator. Once in place, this cutting-edge technology will allow us to treat even the most complex cancer cases with greater speed and precision, while delivering personalized care for each patient's unique condition — right here in Longview. You deserve our deepest appreciation for helping more loved ones, friends and neighbors win the fight against cancer.



You're the reason why

› We're able to ensure expert local cancer care for all, including those in our most remote communities. With a new linear accelerator, we can deliver faster, more precise and personalized treatments here at home, thanks to you. This is a vital advancement, as our Lower Columbia Regional Cancer Center is the only local provider of radiation oncology in Cowlitz, Columbia and Wahkiakum Counties.

“ I never imagined I'd find such advanced care in a small town like Longview. But when I was diagnosed with cancer, the team at PeaceHealth St. John gave me world-class treatment and unwavering support. ” — THOMAS, grateful patient

To date, with community support, we've raised \$4.2 towards our \$5M goal.

A legacy of compassion, a lifeline for many



In the heart of Ketchikan, Alaska, a quiet but powerful legacy lives on through the Cornelia “Pinky” Brindle Cancer Resource Room at [PeaceHealth Ketchikan](#) — a space born from love, loss and a deep desire to help others.

The Brindles were early entrepreneurs in Ketchikan and their many business ventures, starting in the early 1900s, contributed to the growth of the community. At the same time, community support was essential to the success of their businesses. This rich history is why Ketchikan is such an important part of the Brindle family's legacy. It's also why, when the family was looking for a way to honor Cornelia “Pinky” Brindle after she passed away from cancer, they felt the perfect way to do so was to help the community where they have had many great experiences and made many friends. The Brindle family made a generous gift establishing a Cancer Resource Room at PeaceHealth Ketchikan Medical Center in her loving memory.

Since opening in 2019, the Cornelia “Pinky” Brindle Cancer Resource Room has become a lifeline for patients and families. The Resource Room offers guidance, emotional support and access to vital resources, including financial assistance and drug copay programs. In one remarkable case, a \$5,000 copay was reduced to just \$5, allowing a patient to spend a final Christmas surrounded by children and grandchildren.

Today, Pinky's spirit lives on — not just in the name on the door, but in every life touched, every tear dried and every moment of hope sparked within those walls. We can't thank you enough for helping to carry on Pinky's legacy with your generous support.

Caring for the whole person, together



Every day at [PeaceHealth Southwest](#), your generosity powers our healing mission — and reflects the beauty of humanity, love and connection we share in helping others. Nowhere is this more evident than in our Community Health Hub, a vital initiative of our [Healthcare Reimagined Campaign](#) designed to transform emergency care here at home. By partnering with local organizations that provide essential non-medical services, this innovative onsite hub connects our most vulnerable patients in the Emergency Department with trusted community resources. Grounded in compassion and acceptance for all, our Community

Health Hub is there for patients confronting food insecurity, housing instability, domestic abuse and other barriers to living healthier, fuller lives. Fueled entirely by philanthropy, your generosity has positioned us as one of the first hospitals in the nation to offer this kind of integrated, whole-person healthcare. What an amazing act of caring!

Thanks to you! Since opening just a year ago, our Community Health Hub has received more than 600 total referrals — most coming from the Emergency Department, Family Birth Center and Holtzman Twins NICU.

91% of patients referred identify housing as their primary need.

65% of patients experience challenges related to mental health/substance use.

46% of patients referred have limited or no access to reliable healthy food.

45% of patients experience challenges related to limited, inconsistent or no transportation.

10% of patients express concern of domestic and/or sexual violence or reports feeling unsafe at home.

“ I was referred a client who had been dealing with homelessness for the past year. She and her daughter were sleeping in their vehicle after fleeing from domestic violence. They came into the Community Health Hub to complete a housing assessment. I was able to offer them a motel voucher for a few days and continued addressing their needs. Through our work together, the two are now stably housed. ”

— COMMUNITY HEALTH HUB PARTNER

Keeping our community safe, thanks to you



Here on the Oregon Coast, [PeaceHealth Peace Harbor](#) is dedicated to helping our active, outdoor-loving neighbors stay safe while enjoying all the adventure our area has to offer. Thanks to you,

our Injury Prevention and Trauma Education initiatives are built to do just that. Recently, at our second annual Dunes Day event, a large and enthusiastic crowd gathered to learn vital safety tips — turning a fun community day into an opportunity to help prevent injuries and save lives.

The event was a huge success!

- › 180+ community members entered our raffle to win free safety gear.
- › 15 motorcycle helmets and 15 ATV safety goggles were given to adults and youth.
- › 50 neighbors completed Stop the Bleed training and received life-saving kits.
- › 30 individuals learned Hands-Only CPR, preparing them to act in an emergency.
- › 38 children were fitted with bicycle helmets, provided by Western Lane EMS.



“Every 15 Minutes”

Last year, [PeaceHealth Peace Harbor](#) and Western Lane EMS hosted the two-day Every 15 Minutes program at Siuslaw High School. This national initiative focuses on preventing underage impaired driving by engaging youth through realistic scenarios. The event brought together student actors, first responders and community members to demonstrate the serious consequences of driving under the influence. These are the kinds of life-saving programs your gifts make possible!





Your gifts help care for those who care for us

At [PeaceHealth Sacred Heart](#), philanthropy empowers nurses — the heart of our exceptional care — to achieve their fullest potential through innovative initiatives like the Oregon Institute for Nursing Excellence (INE), a dynamic network that includes [PeaceHealth Peace Harbor](#) and [PeaceHealth Cottage Grove](#). In just a few short years, thanks to wonderful gifts from donors like you, the institute has become a powerful force for change, providing our nurses with the tools, resources, recognition and support they need to lead, innovate and shape the future of nursing. Together, we’re advancing the art and science of nursing care — attracting, inspiring and retaining the best and brightest to care for our community. None of this would be possible without you!

You’re the reason why

The [Oregon INE](#) continues making remarkable progress to elevate nursing excellence and enhance patient and family-centered care — a win-win for us all!

505 nurses

at PeaceHealth Sacred Heart were promoted for their exceptional skill and dedication through the Professional Nurse Advancement Program.

16 individual nurses and 5 care teams

received the nationally recognized Daisy Award, honoring their life-changing care, compassion and expertise.



More than 2,100 nurses

employed across the Oregon INE network benefitted from advanced education, mentorship and empowerment.

124 nurse residents

graduated from PeaceHealth Sacred Heart’s Nurse Residency Program, better equipped to enhance patient care.

Empowering nurses, tranforming care

Thanks to generous friends like you, the Institute for Nursing Excellence (INE) now has a vibrant new home at [PeaceHealth St. Joseph](#). Opened in 2024, this incredible place of learning is where innovation, inspiration and collaboration come to life. Much more than just a physical space, the INE embodies a powerful investment in the professional growth and expertise of our dedicated nurses who care for our community every day.



Because of your support, we’re thrilled to share that we’ve recently unveiled a state-of-the-art Simulation Center at the INE. This hands-on training hub prepares nurses for rare but critical emergencies — like restarting a heart or stopping severe internal bleeding — so they’re ready to respond when every second counts. By using advanced patient simulators in a realistic environment, our nurses are gaining life-saving skills like never before. Your gifts fuel these vital efforts!

— Last year’s PeaceHealth St. Joseph INE highlights sparked by you! —

Nurse Growth & Advancement

264 nurses promoted

through the Professional Nurse Advancement Program.

59 new nurse residents onboarded

to meet the growing demand for skilled care in our community.

53 nurses trained

in new specialties through fellowship programs.

Innovation & “Shark Tank” Projects



6 projects from 2024 nearing completion

(including Wound Care Rovers & Multilingual Signage).



7 projects pitched for 2025

(including Bedside Ambient Lighting & ICU Comfort Care Cart).

Training & Simulation



82 hours of simulation at the INE.



18 facilitators trained in 6 months.



6 nurses attended International Simulation Conference.

Research & National Presence

2

national publications featured studies from our nursing team.

5+

national conferences attended with 15 nurses presenting or attending.

100+

attendees at Annual Fall Showcase on nursing excellence.



Across the PeaceHealth system, from Alaska to Oregon, the power of philanthropy is reflected in every story of hope, healing and longer, healthier lives for our loved ones, neighbors and friends. Our heartfelt thanks go out to every donor whose support helps create a healthier future for us all!



Incredible care for our incredible caregivers

Ron and Terry Prill share a profound commitment to caring for those who care for us. Their tradition of giving back began in 2006, when Ron’s life was saved at **PeaceHealth Southwest**. Grateful for the compassionate, expert care they received, the couple has spent nearly two decades supporting initiatives that improve caregiver well-being. Their generosity also helps provide educational opportunities and strengthen retention of skilled, dedicated medical professionals. Such extraordinary acts of generosity help ensure PeaceHealth Southwest remains a place where caregivers are supported, inspired and recognized for the incredible work they do to serve the residents of Clark County.

“Our hospital’s caregivers really are competent and caring. And they’re invaluable! Ron and I wish we could keep every caregiver at PeaceHealth Southwest and attract many more,” says Terry. In that spirit, the Prills recently made a transformational \$2 million gift to establish a new **Caring for Our Caregivers** Fund. “We hope this fund will help improve life for PeaceHealth caregivers many years after we’re gone,” adds Terry about leaving a legacy of better health for everyone in our community, caregivers and patients alike.



Building a legacy of care close to home

For John and Kim Falvey, philanthropy is more than a gesture. It’s a way to secure a healthier future for the place they call home, the community they cherish and all the people they love. A maritime man by trade, a New Englander by birth and an Alaskan by choice, John moved to Ketchikan with his wife, Kim, more than two decades ago. Over the years, **PeaceHealth Ketchikan** has played a meaningful role in their journey toward health and healing. This is why they choose to give back through philanthropy. “We’ve had scans, labs, ER visits — my wife spent a week in the hospital. The care has always been solid,” John shares. “It’s not just the medicine — it’s the people.”

Living on an island, hundreds of miles from the nearest major U.S. hospital, John and Kim know the importance of supporting local healthcare. “PeaceHealth Ketchikan helped us when we needed it most,” says John. Out of gratitude and a desire to elevate health for future generations, the Falveys have made a planned gift of \$500,000 to PeaceHealth.

“I hope for a hospital that keeps pace with the needs of this island. That attracts top doctors. That saves lives. For me, it’s personal. I’ve seen what happens when care is close — and what it costs when it’s not.”

An enduring commitment

When Linda Lauck speaks about **PeaceHealth Peace Harbor**, it’s with the warmth of someone who has lived its care, championed its Mission and shaped its future.

Linda and her late husband, David, first discovered Florence on a fly-fishing trip. The town felt like home. So, in 1990 after retiring, the couple made it their permanent one. From the beginning, they felt a responsibility to support the local hospital — which Linda viewed as not just a place for care, but as a cornerstone of community life.

Linda’s philanthropy began modestly, honoring a hospital staff member as an “angel,” and continued to grow from there. Over time, she and David made an estate gift, leaving their home to PeaceHealth Peace Harbor. Later, Linda established multiple charitable gift annuities and trusts, creating a legacy of support that will endure far beyond her lifetime.

That generosity deepened after David’s cancer diagnosis, when PeaceHealth Peace Harbor Hospice cared for him with exceptional compassion and expertise. “They were just tremendous. I don’t know if we would have had that level of care anywhere else,” Linda recalls. “It’s the love and care of our small community hospital that made all the difference.”

Linda also serves on the Foundation Board, advocating for expanded specialty care in Florence. She encourages others to give — no matter the amount — saying, “Even \$5 or \$10 a month is wonderful. Just do something.” Linda’s legacy reminds us that generosity, rooted in love and community, transforms healthcare and brings care close to home.



Others speak about their why

“After being diagnosed with breast cancer, I immediately put my trust in PeaceHealth. It was a huge comfort knowing I was in such good hands. Today, I’m cancer free, which means more time spent with my children and grandchildren. This is my inspiration for making charitable gifts to PeaceHealth.”

“I’m alive today because of the amazing caregivers at PeaceHealth. Thanks to them, I can say I’m a heart attack survivor — and am back to doing the things I love. My experience moved me to become a PeaceHealth supporter, so others in my community can benefit from the same great care I had.”



Share your why





We carry on the healing mission of Jesus Christ by promoting personal and community health, relieving pain and suffering, and treating each person in a loving and caring way.

Our Mission drives all that we are and all that we do. Through your generous support as a member of the PeaceHealth family, you embrace the spirit of these beliefs and elevate exceptional, compassionate care for all.



Our Values

Respect

We respect the dignity and appreciate the worth of each person as demonstrated by our compassion, caring and acceptance of individual differences.



Collaboration

We value the involvement, cooperation and creativity of all who work together to promote the health of the community.

Stewardship

We choose to serve the community and hold ourselves accountable to exercise ethical and responsible stewardship in the allocation and utilization of human, financial and environmental resources.



Social Justice

We build and evaluate the structures of our organization and those of society to promote the just distribution of healthcare resources.

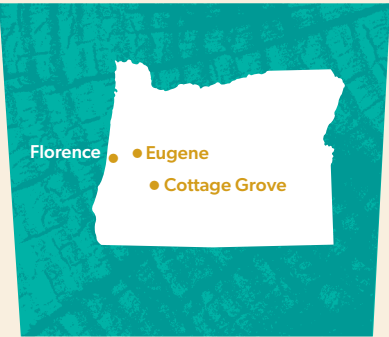


PeaceHealth Southwest Medical Center Foundation

P.O. Box 1600 | Vancouver, WA 98668  
360-514-3106  
peacehealth.org/foundation/southwest

PeaceHealth St. John Medical Center Foundation

P.O. Box 3002 | Longview, WA 98632  
360-414-7900  
peacehealth.org/foundation/st-john



PeaceHealth Sacred Heart Medical Center Foundation

P.O. Box 10905 | Eugene, OR 97440  
541-222-7100  
peacehealth.org/foundation/sacred-heart

PeaceHealth Peace Harbor Medical Center Foundation

400 Ninth Street | Florence, OR 97439  
541-902-6589  
peacehealth.org/foundation/peace-harbor

PeaceHealth Cottage Grove Community Medical Center Foundation

1515 Village Drive | Cottage Grove, OR 97424  
541-222-7100  
peacehealth.org/foundation/cottage-grove



PeaceHealth St. Joseph Medical Center Foundation

2901 Squalicum Parkway | Bellingham, WA 98225  
360-788-6866  
peacehealth.org/foundation/st-joseph

Whatcom Hospice Foundation

2901 Squalicum Parkway | Bellingham, WA 98225  
360-788-6866  
www.whatcomhospice.org

PeaceHealth United General Medical Foundation

2000 Hospital Drive | Sedro-Woolley, WA 98284  
360-788-6861  
peacehealth.org/foundation/united-general

PeaceHealth Ketchikan Medical Center Foundation

3100 Tongass Avenue | Ketchikan, AK 99901  
907-228-8300 ext. 7037  
peacehealth.org/foundation/ketchikan





**Because of you,  
lives are changed and saved**



**Thank you for creating healthier communities!**



Please donate at [peacehealth.org/foundation/donate-local](https://peacehealth.org/foundation/donate-local)