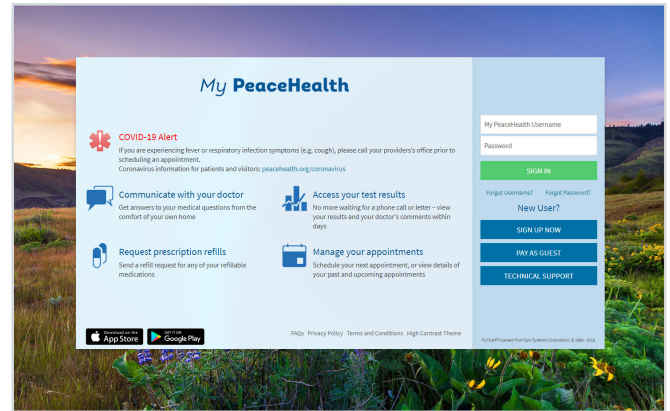
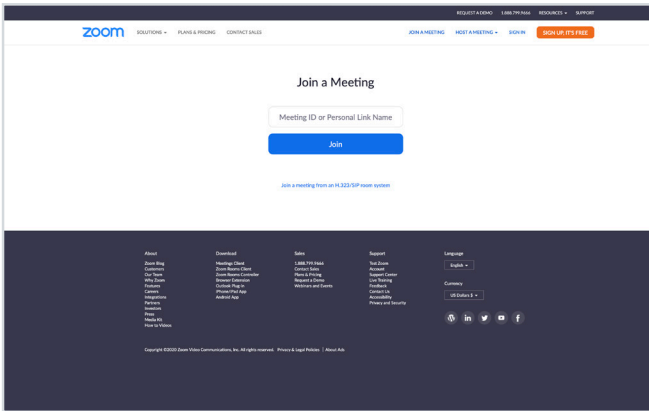


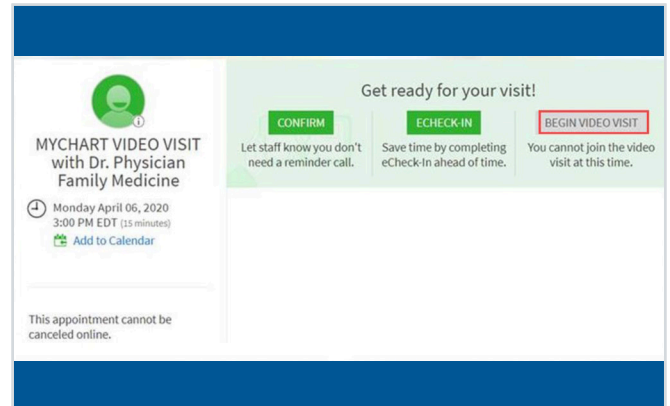
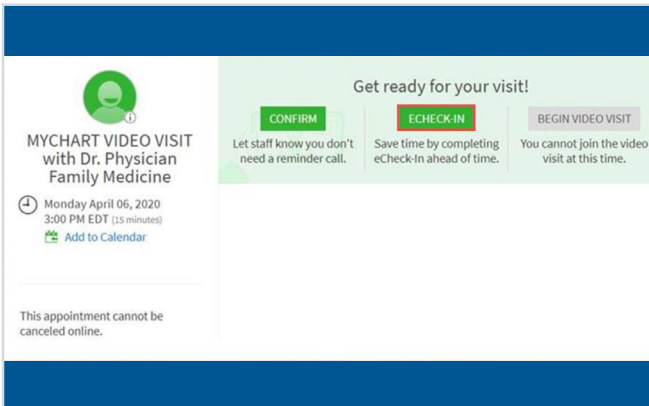
How to log into a desktop video visit

Using a computer? Follow these steps:



1 Install ZOOM Cloud Meetings.

2 Log into My PeaceHealth at mypeacehealth.org



3 Click the e-Check-in button by clicking the green button to Update Information.

4 When ready, click the green “begin video visit” button.

This will launch ZOOM. You may need to allow ZOOM to launch by clicking Run or Allow. Your video meeting will begin when your provider (host) joins the ZOOM meeting.



If you want a family member or caregiver to join the visit remotely, you will be able to invite them once the visit has started.