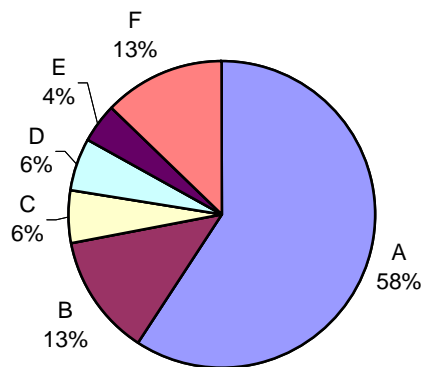


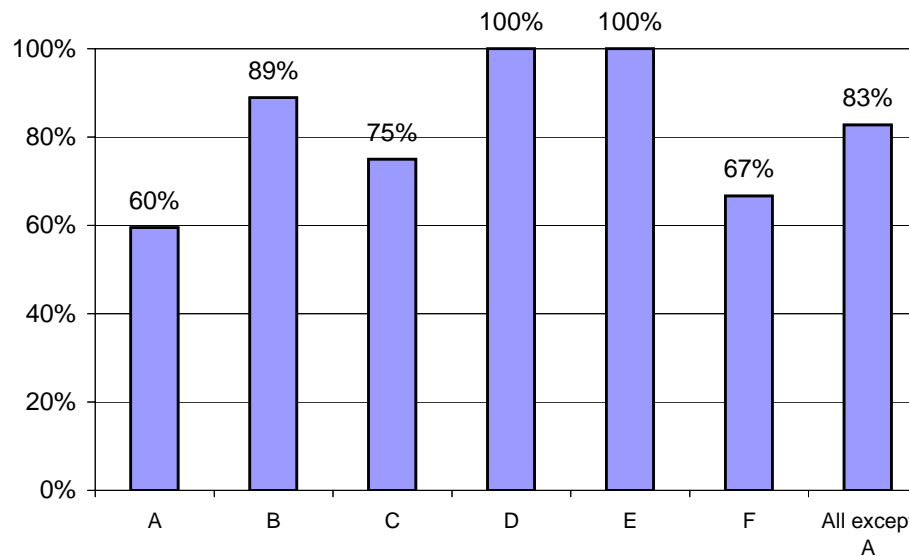
Community Treatment Profile: Breast Conserving Therapy for T1 Breast Cancers Diagnosed in 2004

Surgeon	# T1 Lumpectomies	# XRT, provider 612	# XRT, provider 18	% XRT at SJH	# XRT, other provider	# No XRT	% XRT
A	42	15	8	55%	2	17	60%
B	9	4	4	89%	0	1	89%
C	4	3	0	75%	0	1	75%
D	4	4	0	100%	0	0	100%
E	3	2	1	100%	0	0	100%
F	9	5	1	67%	0	3	67%
TOTAL	71	33	14	66%	2	22	69%
<i>All except A</i>	29	18	6	83%	0	5	83%

Lumpectomies Performed for T1 Breast Cancers Diagnosed in 2004 By Surgeon (total # cases = 71)



Breast Conserving Surgery (BCS) for T1 Breast Cancers Diagnosed in 2004 % of Patients with XRT, by Surgeon



Volume Assumptions: Partial Breast Irradiation with HDR

71	2004 T1 Breast Cancers with BCS
	less: 20% decline xrt
	less: T1 cases with >2 nodes
	less: 50% of #T1C not appropriate for PBI
34	Subtotal, # Pts Offered PBI Option
	less: 1/2 randomized to non-HDR
	less: # technically ineligible
14	Est # HDR cases/year based on CY04 Volumes