



Our philosophy of care

We believe women and their families are entitled to a full range of health care regardless of age, race, creed, national origin or economic status.

Our comprehensive care addresses the physical, emotional, psychological, spiritual, social and educational needs of our patients.

We serve women and families who value personalized care, privacy and confidentiality, safety, comfort, and personal dignity.

Our patients participate in decisions that affect their care and the location of their baby's birth.

Our staff

Certified nurse midwives are registered nurses who have a master's degree in nursing and have passed a national certification exam accredited by the American College of Nurse-Midwives. Our services are covered by most insurance plans.



Nurse Midwifery Birth Center

511 East 12th Avenue
Eugene, OR 97401
(541) 484-5796

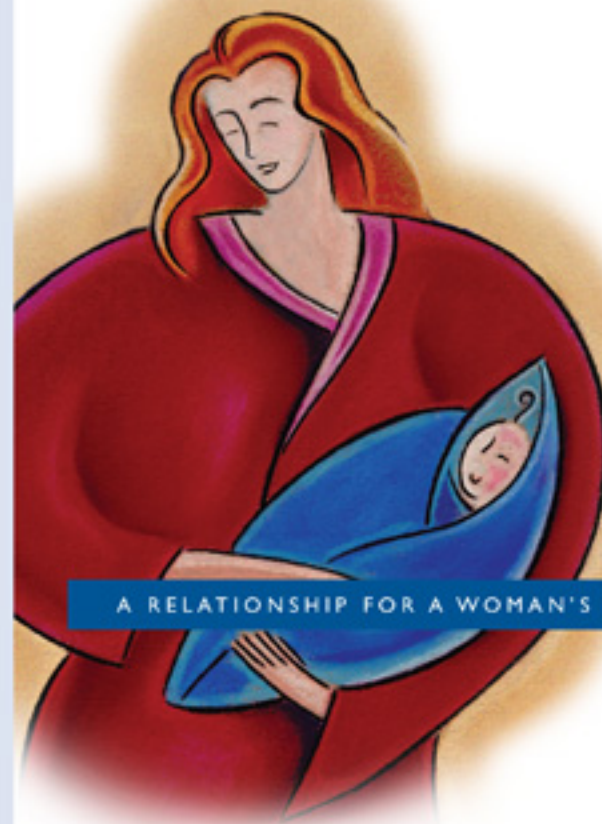
To tour the birth center call 484-5796, or visit www.peacehealth.org/phmg and click on Specialty Care then click on Midwifery.



www.peacehealth.org/phmg

PA 134 (120205)

NURSE MIDWIFERY BIRTH CENTER



A RELATIONSHIP FOR A WOMAN'S LIFETIME





Midwifery Services

Midwifery Services provides comprehensive care for women of all ages, including:

Well Woman Care

- Preconception counseling
- Family planning
- Gynecological services
- Prescriptions

Pregnancy & Childbirth

- Prenatal care
- Labor and delivery
- Postnatal care
- Breastfeeding support
- Collaboration with PeaceHealth Medical Group Specialists
- Choice of delivering your baby at the Birth Center or at Sacred Heart Medical Center

Delivery Options

The **Nurse Midwifery Birth Center** is housed in a historic home with hand-stitched quilts and antique furniture. We make every effort to create the intimate, family feeling of an at-home birth, while providing the safety and support of our highly skilled and caring team of professionals. It is the birthing choice for many pregnant women at low risk for complications.

The Birth Center is accredited by the Commission for the Accreditation of Birth Centers.

Sacred Heart Medical Center offers birthing services in a caring, supportive manner, with access to the most advanced medical support available, including a Neonatal Intensive Care Unit.

Our circle of care

During pregnancy

Your midwife monitors your health and that of your baby. She provides individualized prenatal care, including education on the physical changes of pregnancy, nutrition, exercise, childbirth, infant health and parenting.

During labor and birth

Your midwife provides emotional and physical support and evaluates the progress of your labor. She makes every effort to encourage the natural process of labor and to involve your family. She is also trained in pain management and able to provide medication for those who wish it.

Your midwife assists you in delivering your baby and is trained to manage a broad range of ordinary complications.

After delivery

Follow-up care begins immediately after birth, as the nurse midwife examines the newborn and provides advice on breastfeeding, infant care and recovery after birth.

Breastfeeding Support

Our team includes board-certified lactation consultants. They provide instruction on infant care and feeding and are available for support 24 hours a day.

In addition, the Birth Center hosts a free lactation support group every Tuesday from noon to 2 p.m.

The Birth Center is designated "Baby Friendly" in compliance with requirements set by UNICEF and the World Health Organization. The designation recognizes hospitals and birth centers who provide an optimal environment for breastfeeding by implementing a ten-step program to help new moms successfully breastfeed their newborns.

A lifetime of care

Your midwife can see you for routine checkups and for gynecological services such as annual pelvic and breast exams, pap smears and all methods of family planning.

